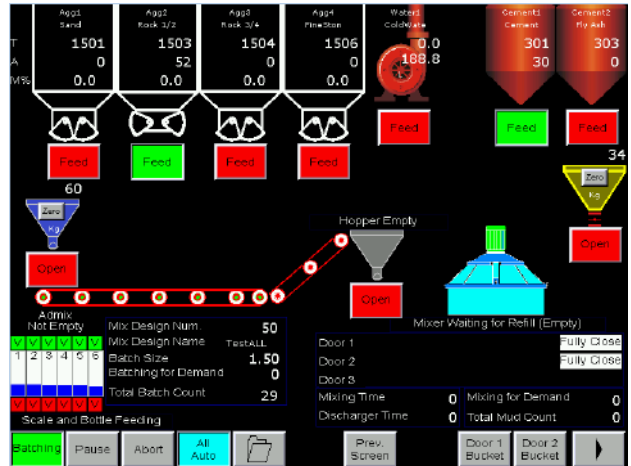


# BatchTron I

THE FULL-FEATURED CONCRETE BATCH CONTROLLER  
THAT GIVES THE BEST VALUE FOR YOUR MONEY

- Eliminate expensive down time. BatchTron uses PLC and touch screen to give you reliability that just isn't possible with computer-based systems.
- Eliminate batch weight errors and wasted product with automatic self-tuning that keeps your plant at peak trim all the time.
- All the controls are right on the screen - no broken switches or loose wires.
- The scale displays are all on the touch screen, making it even more reliable. No error between external weight indicators and the control system.
- BatchTron doesn't use Windows software; it uses PLC software, which is guaranteed freeze-proof.
- Pre-programmed to fit many plants. Choose between dry plant or premix plant (with mixer). Select aggregate holding hopper over the mixer, skip hoist or just a belt feed, from a screen menu. The number of aggregates, cements, waters and admixtures determine the expansion required.
- Download new updates with STI (Service and Training by Internet) and receive remote support and training.



*Get the best value from your plant by running it with the best controls. BatchTron I is a step ahead of other control systems. Re-engineered from the top down, BatchTron I gives you all the features that make its bigger brothers so powerful and easy to use, while keeping the cost to an absolute minimum. From ready-mix to portable plants and products plants, BatchTron I gives you outstanding value for your money.*

## TOUCH AND GO

Load a formula, choose the batch size and press GO. It's that easy to make a batch. Everything else is automatic. Or touch a feed button to feed aggregates into the scale. Touch the discharge button to discharge the scale. Start or stop the mixer; on-screen buttons allow individual automatic or manual operation of every function, not just one AUTO/MAN switch that forces you to run manually when a fault occurs. This allows minor breakdowns like faulty limit switches to be bypassed without affecting the rest of the system. This keeps you running automatically except for the one function that you bypassed.

Enter, retrieve, modify and copy formulas from one memory location to another. Modify ingredients or formulas on the fly. It's fast, accurate and easy with BatchTron's touch keyboard.

BatchTron-I's 7" color touch screen has clear animated graphics to picture your plant as it operates. Multiple languages available.

## THE BATCHTRON RANGE

High-powered PLC based controllers that makes life easy with an intuitive graphic touch screen interface. Applications include Precast, Prestressed, Block, Pavers, Ready-Mix, Architectural, Dams, Roadways, Mines and more.

**BatchTron II**, with 10" color screen, runs dry or single mixer plants with multiple delivery stations. Can be customized to your exact needs

**Batch Tron III**, with 12" color screen, runs multiple mixer plants with multiple delivery stations. Capable of extensive customization to suit practically any plant configuration.

## CHOOSE DRY OR PREMIX

### BatchTron I for dry plants (without mixer)

Basic system: Aggregate and cement scales plus optional water scale, 6 aggregates, 3 cements, 1 water by meter or scale and 6 admixtures by meter and sight glass.

Expansion package A – 3 cements, 2 waters.

Expansion package B – increased to 8 analog channels for moisture sensors and additional scales.

### BatchTron I for premix plants (with mixer)

Basic system: Aggregate and cement scales plus optional water scale, 3 aggregates, 2 cements, 1 water by meter or scale, 5 admixtures by meter and sight glass, plus 1 mixer with aggregate feed by conveyor, conveyor plus holding hopper or direct.

Expansion package C – Extra scale inputs- includes electronics and software, per extra scale.

More than one extra scale requires addition of Expansion package B above.

All BatchTron I systems have storage for 800 formulas.

Console cabinet 20"W x 16"H x 12"D

Wall mount cabinet 20"W x 20"H x 8.5"D



### THE ADDED POWER OF THE PC

BatchLink Reporting is software that you install on a PC and links to your BatchTron. It stores all your batch reports, material usage and production totals as well as material deliveries, giving you instant control over many reports, including inventory. BatchLink Order Entry also provides full order entry and dispatching for single plant operation.

## STARTUP

We offer a full turnkey installation service using our own engineers and Scale-Trons' network of trained dealers. Alternatively, an electrician familiar with industrial controls can install the system from our extensive manual. We recommend that our personnel are present during scale calibration and startup; this allows us to fully train your staff and optimize your plant operation.

## ADDITIONAL EQUIPMENT TO AID EFFICIENCY AND IMPROVE PRODUCT QUALITY

**AquaSense 2280D**- automatically adjusts your batching operation to account for moisture in your sand and fine aggregates.

**AquaMix 2270D**- automatically controls the addition of water in your plant mixer, ensuring uniform consistency which is particularly useful when producing SCC.

**High Pressure Washout**- the highly efficient and safe method of cleaning out your plant mixer. Its washout heads give a complete 360 degree cleaning action with no dead spots.

**SiloWeigh**- our range of silo inventory control systems tell you at a glance what is in your silo as a weight, not a level. You can also connect audible and visual alarms.

**Motor Control Centre**- As a UL certified shop, we can design and build any MCC to suit your new or existing operation.

## WARRANTY AND SUPPORT PLANS

We supply our systems with 12 months unlimited support included.

Thereafter, we offer cost effective support plans:

**Bronze package** - unlimited priority phone and online support.

**Silver package** - unlimited phone and online support support plus free software updates pertaining to your revision of BatchTron.

**Gold package** - all of the above plus free replacement parts for your BatchTron (subject to our fair use policy).

# SCALE-TRON

Automation, Sensors and Weighing Systems

[scaletron.com](http://scaletron.com)

[info@scaletron.com](mailto:info@scaletron.com)

514-940-0337

1-800-632-7083 (USA & Canada)

2113C St Regis Blvd. Dollard-des-Ormeaux,  
Quebec, Canada H9B 2M9