



DOSMEC™ by *BetonMec*
AUTOMATIC FIBER DISPENSER SYSTEMS



STATIONARY SYSTEMS DOSING MACHINES

- ❑ **Model DF-Flex** : Based upon Vibrating Hopper System.
Untangling, weighing and dosing the fibres.
Both for Metal and Synthetic Fibres
- ❑ **Model DF-M** : Based upon Vibrating Hopper System.
Untangling, weighing and dosing the fibres.
Specific for Steel Fibres
- ❑ **Model DF-S** : Based upon Vibrating Hopper System.
Untangling, weighing and dosing the fibres.
Specific for Synthetic Fibres
- ❑ **Model DF-VM** : Based upon Vibrating Hopper System.
Untangling, weighing and dosing the fibres.
This Machine has been engineered to be mounted upon
Concrete Volumetric Mixers
Both for Synthetic and Metal Fibres with Max Ratio L/D:40





AUTOMATIC DISPENSERS AND DOSING MACHINES



Stop inaccurate and risky manual feeding !



*Dosmec™
Automatic Series DF
Storing/Untangling/Dosing and Feeding
the Fibres!*



Stationary System Series DF

Our most popular machine is the DF model in its various versions (DF-Flex/DF-M/DF-S).

It uses the proven feeding system by means of the vibrating hopper.

The vibration unties any ball of fibre allowing them to move in an orderly manner along the vibrating spiral that goes up to the drain.

During this journey the excess of material falls to the bottom of the hopper.

The result is a continuous feeding and a loss in weight when the material falls on the aggregate belt or any other discharge system.

The machine can also be connected to the batching control panel or any other control system as an external signal.

There, the system can deliver a quantity of fibres in the exact percentage compared to the weight of the mixture and then print the production report.





Technical Data Sheet - Series DF

Metric

Models Metric units	Max. Capacity Volume (liters)	Estimated Capacity (liters)	Metal fiber Output Kg/Min	Synthetic fiber Output Kg/Min	Power Kw	Weight Kg (empty)
DF 1000	470	380	20/ 80	3/10	2,2	600
DF 1200	790	650	20/100	3/12	2,2	700
DF 1500	1400	1150	40/120	5/15	3,0	900
DF 1800	2200	1800	40/150	5/18	4,0	1.250
DF 2000	3000	2500	40/200	5/25	4,4	1.550

Imperial /U.S.

Models English units	Max. Capacity Volume (cu. ft.)	Estimated Capacity (cu.ft)	Metal fiber Output lb/Min	Synthetic fiber Output lb/Min	Power H.P.	Weight lb (empty)
DF 1000	10.5	1320	44/176	6/22	3	600
DF 1200	14	1760	44/220	6/26	3	700
DF 1500	26	3310	88/265	11/33	4	900
DF 1800	42	5290	88/330	11/40	5.5	1.250
DF 2000	52	6615	88/440	11/55	6	1.550



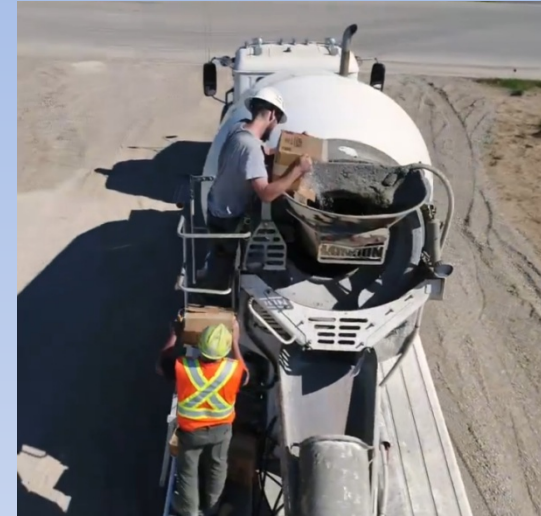
Mobile System Series DFVM

DF- VM is the new dispenser of Dosmec™. It has been specially designed and produced to be fixed upon volumetric mixers.

Thanks to its limited dimensions DFVM allows to dose and feed fibres (metallic and synthetic -Ratio max L/D : 40). The fibres go directly into the mixing auger without the need of other external devices or manual feeding. The operator only need to refill the hopper when empty!

The control panel can be connected to the Volumetric Mixer Panel or any other system control as an external signal.

In this way the system can deliver a quantity of fibres in the exact percentage compared to to the weight of the mixture and then print the production report.



No more !!!!



Automatic Dosing System !!!!